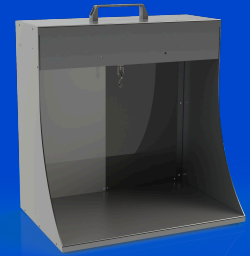


# Consistent Manual Inspection with DIH



Elevate manual inspection with optimized backgrounds and lighting



The DIH series is designed to aid in the manual inspection of syringes, vials, cartridges, IV bags, and other product types. This is accomplished using overhead LED lighting with adjustable intensity, black and white backgrounds, and a 2.5X adjustable magnification lens to aid in operator inspection. In addition, the inspection hood is designed to help block outside light sources, reducing the possibility of unwanted reflective qualities on the container.

## Overhead Lighting

- Isotropic diffused 18" fluorescent-style LED light
- Black anodized finish
- Approximately 3 times brighter than fluorescent tubes
- Independent on/off switch
- Operating temperature: 104 degrees F
- Current consumption: 0.2A to 6.0A+
- Illuminance: 10,000 Lux
- Lifetime hours: 75,000 hours
- Intensity Control
- Low voltage 24VDC input
- CE compliant

## Main Hood Body

- Dimensions: 24" W x 22" H x 9" D
- Ergonomic inspection hood
- Inspection hood side panels
- Swivel-up base
- Padded armrest
- Aluminum black FDA-approved powder coating
- Ergonomic carrying handle

## Inspection and Accessories

- Large black and white inspection backgrounds
- 2.5 X magnification lens with adjustable arm and assembly
- IV bag attachment available

